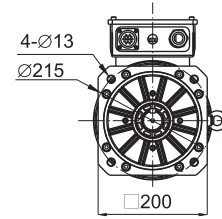
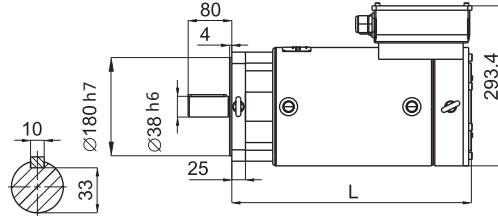
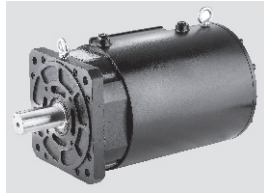
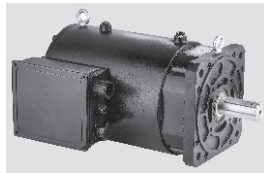


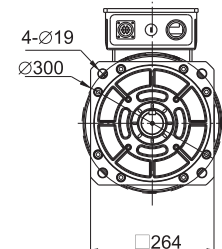
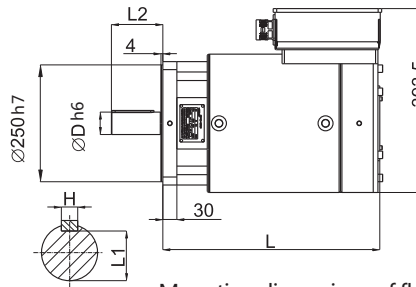
200mm, 260mm Permanent Magnet AC Servo Motors - Technical Parameters (*liquid cooling*)



Mounting dimensions of flame size 200



Size	≥384 N.m	Other
D	60	48
H	18	14
L1	53	42.5



Mounting dimensions of flame size 260

Flame size 200mm

Model	Rated Torque	Rated Voltage	Rated Speed	Rated Power	Rated Current	Kt	Ke	Max. Speed	Max. Torque	Rotor Inertia	Poles	Weight	Length
	N.m	Vac	rpm	kW	A	N.m/A	V/krpm	rpm	N.m	Kg.cm ²	poles	Kg	mm
200H15D15C	96	380	1500	15	35	3.0	184	2000	288	95	8	37	369
200H17D17C	96	380	1700	17	39	2.7	164	2300	288	95	8	37	369
200H20D20C	96	380	2000	20	46	2.3	139	2500	288	95	8	37	369
200H18D15C	118	380	1500	19	43	3.0	183	2000	354	115	8	48	399
200H21D17C	118	380	1700	21	48	2.7	165	2300	354	115	8	48	399
200H25D20C	118	380	2000	25	56	2.3	141	2500	354	115	8	48	399
200H22D15C	141	380	1500	22	49	3.2	191	2000	423	141	8	57	439
200H25D17C	141	380	1700	25	56	2.8	168	2300	423	141	8	57	439
200H30D20C	141	380	2000	30	65	2.4	145	2500	423	141	8	57	439
200H27D15C	170	380	1500	27	59	3.2	192	2000	510	167	8	68	479
200H30D17C	170	380	1700	30	65	2.9	174	2300	510	167	8	68	479
200H36D20C	170	380	2000	36	78	2.4	146	2500	510	167	8	68	479

Flame size 260mm

Model	Rated Torque	Rated Voltage	Rated Speed	Rated Power	Rated Current	Kt	Ke	Max. Speed	Max. Torque	Rotor Inertia	Poles	Weight	Length
	N.m	Vac	rpm	kW	A	N.m/A	V/krpm	rpm	N.m	Kg.cm ²	poles	Kg	mm
260H33D15C	208	380	1500	33	73	3.1	189	2000	624	385	8	110	384
260H37D17C	208	380	1700	37	83	2.7	165	2300	624	385	8	110	384
260H44D20C	208	380	2000	44	97	2.3	142	2500	624	385	8	110	384
260H41D15C	264	380	1500	41	89	3.2	196	2000	792	493	8	120	434
260H47D17C	264	380	1700	47	100	2.9	175	2300	792	493	8	120	434
260H55D20C	264	380	2000	55	122	2.4	144	2500	792	493	8	120	434
260H50D15C	316	380	1500	50	107	3.2	195	2000	948	578	8	125	464
260H56D17C	316	380	1700	56	123	2.8	171	2300	948	578	8	125	464
260H66D20C	316	380	2000	66	143	2.4	146	2500	948	578	8	125	464
260H60D15C	384	380	1500	60	132	3.2	193	2000	1152	698	8	139	514
260H68D17C	384	380	1700	68	143	3.0	179	2300	1152	698	8	139	514
260H80D20C	384	380	2000	80	171	2.5	149	2500	1152	698	8	139	514
260H75D15C	480	380	1500	75	168	3.1	189	2000	1440	995	8	174	587
260H85D17C	480	380	1700	85	187	2.8	170	2300	1440	995	8	174	587
260H10E20C	480	380	2000	101	211	2.5	151	2500	1440	995	8	174	587

Insulation grade: Class-H; Thermal protection : PT100, with KTY optional; Protection grade: IP65 (except the terminal box);
Wiring method: Terminal box; Cooling method: Oil-cooling or water-cooling; Working standard: Long-term, S1