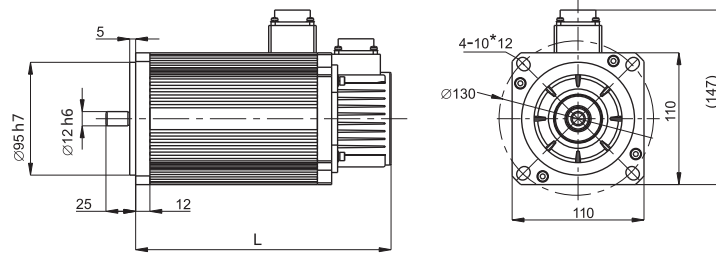
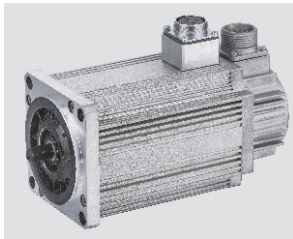
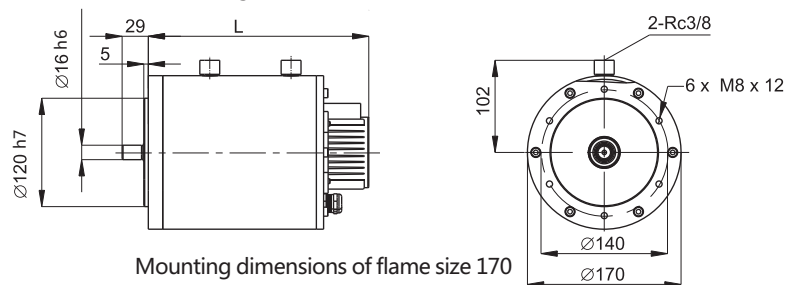


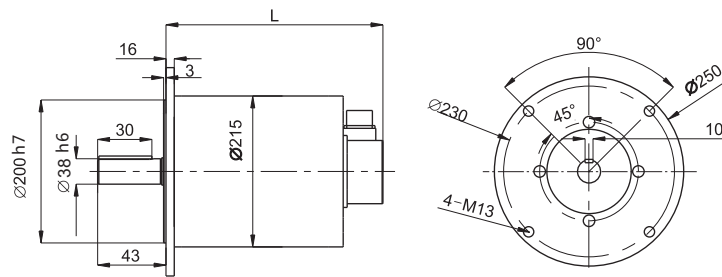
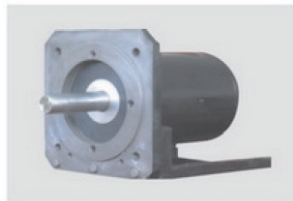
110mm, 170mm, 215mm Permanent Magnet AC Servo Motors - Technical Parameters (*high-speed*)



Mounting dimensions of flame size 110



Mounting dimensions of flame size 170



Mounting dimensions of flame size 215

Flame size 450mm

Model	Rated Torque	Rated Voltage	Rated Speed	Rated Power	Rated Current	Kt	Ke	Max. Speed	Max. Torque	Rotor Inertia	Poles	Weight	Length
	N.m	Vac	rpm	kW	A	N.m/A	V/krpm	rpm	N.m	Kg.cm ²	poles	Kg	mm
110H15C70C	2.1	380	7000	1.5	3.2	0.8	46.7	8000	6.2	3.5	4	11	215
110H15C80C	1.8	380	8000	1.5	3.1	0.7	41.1	9000	5.4	3.5	4	11	215

Flame size 450mm

Model	Rated Torque	Rated Voltage	Rated Speed	Rated Power	Rated Current	Kt	Ke	Max. Speed	Max. Torque	Rotor Inertia	Poles	Weight	Length
	N.m	Vac	rpm	kW	A	N.m/A	V/krpm	rpm	N.m	Kg.cm ²	poles	Kg	mm
170H80C80C	9.5	380	8000	8	17	0.63	38.3	10000	19.0	3.5	4	26	244
170H11D12D	8.8	380	12000	11	24	0.41	25.0	14000	17.6	3.5	4	26	244
170H15D20D	7.2	380	20000	15	31	0.27	16.2	22000	14.4	3.5	4	26	244
170H22D20D	10.5	380	20000	22	46	0.26	15.7	22000	21.0	4.5	4	28	265

Flame size 450mm

Model	Rated Torque	Rated Voltage	Rated Speed	Rated Power	Rated Current	Kt	Ke	Max. Speed	Max. Torque	Rotor Inertia	Poles	Weight	Length
	N.m	Vac	rpm	kW	A	N.m/A	V/krpm	rpm	N.m	Kg.cm ²	poles	Kg	mm
215A11D50C	21.0	220	5000	11	38	0.6	36.1	7000	42.0	33	4	41	163
215A13D50C	24.8	220	5000	13	45	0.6	36.0	7000	49.6	38	4	43	170
215H22D50C	42.0	380	5000	22	42	1.1	65.3	7000	84.0	68	4	53	210
215H30D50C	57.4	380	5000	30	57	1.1	65.8	7000	114.8	96	4	63	250
215H37D50C	70.7	380	5000	37	70	1.1	66.0	7000	141.4	123	4	75	300
215H50D50C	95.5	380	5000	50	94	1.1	66.4	7000	191.0	184	4	93	370

Insulation grade: Class-H; Thermal protection : PT100, with KTY optional; Protection Grade: IP65; Working standard: Long-term, S1